

Phytosociological Research Center

www.globalbioclimatics.org

Worldwide Bioclimatic Classification System

Prof.Dr. Salvador Rivas-Martinez

(Adapted to Synoptical Table 30/08/2017)

FARO SEGUNDA BARRANCA (ARGENTINA) Altitude: 9 m.

Latitude: 40°47'S Longitude: 62°16'W
 Temperature observation period.: 1941-1950 (10)
 Rainfall observation period....: 1941-1950 (10)

(C/mm)	Ti	Mi	mi	M'i	m'i	Pi	Epi
Jan.	19.40	26.10	14.40	43.40	3.00	20.0	112.42
Feb.	19.50	23.00	14.50	40.40	5.00	40.0	95.38
Mar.	17.10	23.20	12.20	34.00	1.80	57.0	79.81
Apr.	14.40	20.50	9.50	31.20	-1.50	40.0	54.94
May.	10.70	16.20	6.10	24.40	-4.50	38.0	33.56
Jun.	7.70	12.90	3.00	22.70	-4.60	11.0	19.45
Jul.	6.50	12.40	2.00	20.80	-5.20	44.0	16.66
Aug.	7.40	13.30	2.60	27.50	-6.00	21.0	22.02
Sep.	9.90	15.70	5.20	27.70	-2.50	33.0	35.53
Oct.	12.80	19.20	7.50	32.00	-2.20	35.0	57.90
Nov.	15.70	22.30	10.40	37.20	0.00	28.0	80.38
Dec.	18.00	24.90	13.60	39.40	3.60	22.0	103.96
Year	13.26	19.14	8.42	31.73	-1.09	389	712.03

BIOCLIMATIC INDICES AND DIAGNOSIS

Thermicity index.....(It):	277
Compensated thermicity index.....(Itc):	277
Simple continentality index.....(Ic):	13.0
Diurnality index.....(Id):	11.9
Annual ombrothermic index.....(Io):	2.45
Monthly estival ombrothermic index.....(Ios1):	1.03
Bimonthly estival ombrothermic index.....(Ios2):	1.54
Threemonthly estival ombrothermic index.....(Ios3):	1.44
Fourmonthly estival ombrothermic index.....(Ios4):	1.52
Annual ombro-evaporation index.....(Ioe):	1.14
Annual positive temperature.....(Tp):	1591
Annual negative temperature.....(Tn):	0
Estival temperature.....(Ts):	569
Positive precipitation.....(Pp):	389

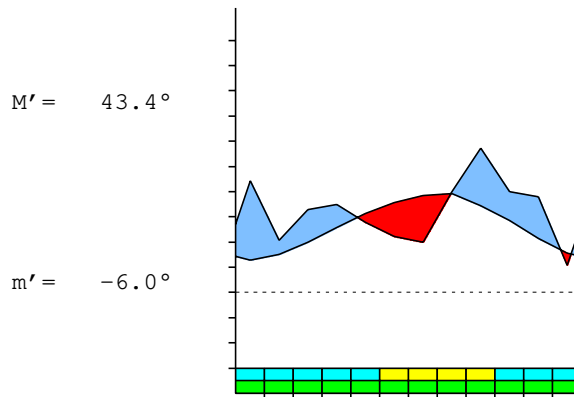
N. of	P>4T	P:2T-4T	PT-2T	P<T	T<0
Months	1	7	4	0	0

Latitudinal Belt...: Low eutemperate
 Continentality.....: Oceanic - Low Semihyperoceanic
 Bioclimate.....: MEDITERRANEAN PLUVISEASONAL-OCEANIC
 Bioclimatic Belt...: UPPER MESOMEDITERRANEAN LOW DRY

FARO SEGUNDA BARRANCA (ARGENTINA)

9 m

P= 389 40° 47' S 62° 16' W 10/10 y.
 T= 13.3° Ic= 13.0 Tp= 1591 Tn= 0
 m= 2.0° M= 12.4° Itc= 277 Io= 2.4



MEDITERRANEAN PLUVISEASONAL-OCEANIC
 UPPER MESOMEDITERRANEAN LOW DRY

WATER INDEX CARD

FARO SEGUNDA BARRANCA (ARGENTINA)

Altitude: 9 m.

Latitude: 40° 47' S

(C/mm)	T	PE	P	VR	R	RE	DF	SP	DR	HC
Jul.	6.5	17	44	27	27	17	0	0	0	1.6
Aug.	7.4	22	21	-1	26	22	0	0	0	0.0
Sep.	9.9	36	33	-3	24	36	0	0	0	0.0
Oct.	12.8	58	35	-23	1	58	0	0	0	-0.3
Nov.	15.7	80	28	-1	0	29	51	0	0	-0.6
Dec.	18.0	104	22	0	0	22	82	0	0	-0.7
Jan.	19.4	112	20	0	0	20	92	0	0	-0.8
Feb.	19.5	95	40	0	0	40	55	0	0	-0.5
Mar.	17.1	80	57	0	0	57	23	0	0	-0.2
Apr.	14.4	55	40	0	0	40	15	0	0	-0.2
May.	10.7	34	38	4	4	34	0	0	0	0.1
Jun.	7.7	19	11	-4	0	15	4	0	0	-0.4
Year	13.3	712	389	*	*	389	323	0	0	*

R = Reserve VR = Variation of the reserve RE = Real evapotranspiration
 DR = Drainage HC = Humidity coefficient DF = Deficit SP = Superavit

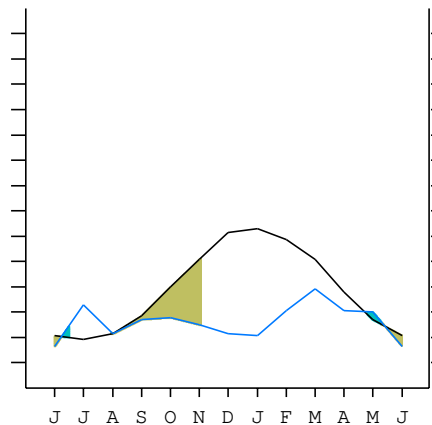
FARO SEGUNDA BARRANCA (ARGENTINA)

40°47' S 62°16' W

9 m 10/10 y.

T= 13.3 Ic= 13.0 MEDITERRANEAN PLUVISEASONAL-OCEANIC
 m= 2.0 Tp= 1591 UPPER MESOMEDITERRANEAN
 M= 12.4 Tn= 0 LOW DRY
 M' = 43.4 Itc= 277
 m' = -6.0 Io= 2.4
 P= 389 mm
 PE= 712 mm

Imbibing	24 Apr.
Saturation	11 May.
Reserve Use	1 Nov.
Deficit	



FARO SEGUNDA BARRANCA (ARGENTINA)

Latitude: 40°47'S Longitude: 62°16'W Altitude: 9 m

SUMMARY OF RIVAS-MARTINEZ CLASSIFICATION

Continental Index [B1b]
 + Type: B. Oceanic
 + Subtype: 1. Semihyperoceanic
 + Variant: b. Low
 Thermic types [B1.B4]
 + Latitudinal zone: B. Temperate
 + Latitudinal belt: 1. Low eutemperate
 + Thermic type: B. Temperate
 + Thermic subtype: 4. Temperate
 Bioclimatic types [B8.3a.5b]
 + Macrobioclimate: B. MEDITERRANEAN
 + Bioclimate: 8. PLUVISEASONAL-OCEANIC
 + Bioclimatic variant ..:
 + Thermic type.....: 3. MESOMEDITERRANEAN
 + Thermic subtype.....: a. UPPER
 + Ombrothermic type ...: 5. DRY
 + Ombrothermic subtype : b. LOW
 Bioclimatic Classification: Mehc.Mme.Dry

FARO SEGUNDA BARRANCA (ARGENTINA)

Latitude: 40°47'S Longitude: 62°16'W Altitude: 9 m

PRECIPITATION PARAMETERS

Warmest semester of the year.....(Pss): 207
 Coldest semester of the year.....(Psw): 182
 Warmest four months period of the year.....(Pcm1): 139
 Following warmest four months period.....(Pcm2): 133
 Positive precipitation dryest 3 months.....(Ppd): 70
 Positive precipitation dryest 2 months.....(Ppd2): 42
 Positive precipitation dryest 1 month.....(Ppd1): 11
 Positive precipitation warmest 3 months.....(Pps): 82
 Positive precipitation warmest 2 months.....(Pps2): 60
 Positive precipitation warmest 1 month.....(Pps1): 40
 Positive precipitation coldest 3 months.....(Ppw): 76
 Positive precipitation coldest 2 months.....(Ppw2): 65
 Positive precipitation coldest 1 month.....(Ppw1): 44

Seasons	Winter Tr1-W	Spring Tr2-P	Summer Tr3-S	Automn Tr4-F
Rainfall	76	96	82	135

Seasonal rainfall rhythms: F > P > S > W

FARO SEGUNDA BARRANCA (ARGENTINA)

Latitude: 40°47'S Longitude: 62°16'W Altitude: 9 m

TEMPERATURE PARAMETERS

Average warmest month [T].....(Tmax): 19.5
 Average coldest month [T].....(Tmin): 6.5
 Maximum temp. warmest month [M].....(Tmmax): 26.1
 Minimum temp. coldest month [m].....(Tmmin): 2.0
 Absolute Max.temp. warmest month [M'].....(Tamax): 43.4
 Absolute Min.temp. coldest month [m'].....(Tamin): -6.0
 First warmest contrasted month [M].....(Tcmax): 22.3 (11)
 First coldest contrasted month [m].....(Tcmin): 10.4 (11)
 Estival temperature.....(Ts): 569
 Positive temperature dryest 3 months.....(Tpd): 531
 Positive temperature dryest 2 months.....(Tpd2): 374
 Positive temperature dryest 1 month.....(Tpd1): 77
 Positive temperature warmest 3 months.....(Tps): 569
 Positive temperature warmest 2 months.....(Tps2): 389
 Positive temperature warmest 1 month.....(Tps1): 195
 Positive temperature coldest 3 months.....(Tpw): 216
 Positive temperature coldest 2 months.....(Tpw2): 139
 Positive temperature coldest 1 month.....(Tpw1): 65

FARO SEGUNDA BARRANCA (ARGENTINA)

Latitude: 40°47'S Longitude: 62°16'W Altitude: 9 m

SEASONAL PARAMETERS

	Jan	Feb	Mar	Apr	May	Jun	Jul	Aug	Sep	Oct	Nov	Dec
Warmest semester...(Sms)	o	o	o	o							o	o
Dryest semester....(Smd)	o							o	o	o	o	o
Warmest 4 months...(Cm1)	o	o	o									o
Dryest 4 months....(Cmd)	o									o	o	o
Vegetation Activity(Pav)	o	o	o	o	o	o	o	o	o	o	o	o
Ultragelid...[M' <=0] (Pf)												
Hypergelid...[M <=0] (Pf)												
Gelid.....[T <=0] (Pf)												
Subgelid.....[m <=0] (Pf)												
Pregelid.....[m' <=0] (Pf)				o	o	o	o	o	o	o	o	
Agelid.....[m' > 0] (Pf)	o	o	o									o
HiperAgelid..[all>0] (Pf)	o	o	o									o

FARO SEGUNDA BARRANCA (ARGENTINA)

Latitude: 40°47'S Longitude: 62°16'W Altitude: 9 m

OMBROTHERMIC PARAMETERS

Annual aridity index.[PE/P].....(Iar): 1.83
 Mediterranean index of January.....(Im1): 5.62
 Mediterranean index of January & February.....(Im2): 3.46
 Mediterranean index of December to February...(Im3): 3.80

Months	Dec.	Jan.	Feb.	Mar.	Apr.	May.	Jun.	Jul.	Aug.	Sep.	Oct.	Nov.
Pp(x10)	220	200	400	570	400	380	110	440	210	330	350	280
Tp	180	194	195	171	144	107	77	65	74	99	128	157
Io (Iom)	1.22	1.03	2.05	3.33	2.78	3.55	1.43	6.77	2.84	3.33	2.73	1.78
Seasons	Summer			Autumn			Winter			Spring		
Pp(x10)/Tp	820 / 569			1350 / 422			760 / 216			960 / 384		
Io (Iot)	1.441			3.199			3.519			2.500		
Semesters	December-May						June-November					
Pp(x10)/Tp	2170 / 991						1720 / 600					
Io (Iosm)	2.190						2.867					

FARO SEGUNDA BARRANCA (ARGENTINA)

Latitude: 40°47'S Longitude: 62°16'W Altitude: 9 m

Aridity Value Index (AVI)

[10xPP/TP=IO]: 3890/1591=2.45 **There is No Yearly Aridity**

Months	Dec.	Jan.	Feb.	Mar.	Apr.	May.	Jun.	Jul.	Aug.	Sep.	Oct.	Nov.
Pp [P*10]	220	200	400	570	400	380	110	440	210	330	350	280
Tp [T*10]	180	194	195	171	144	107	77	65	74	99	128	157
Iom [Pp/Tp]	122	103	205	333	278	355	143	677	284	333	273	178
Avm [200-Iom]	78	97	***	***	***	***	57	***	***	***	***	22
Seasons	Summer			Autumn			Winter			Spring		
Pp / Tp	820 / 569			1350 / 422			760 / 216			960 / 384		
Iot [Pp/Tp]	144			320			352			250		
Avs E[Avm<200]	***			***			***			***		
Strong lower semiarid [1]							Weak lower semiarid [2]					
Weak upper semiarid [1]												

FARO SEGUNDA BARRANCA (ARGENTINA)

Latitude: 40°47'S Longitude: 62°16'W Altitude: 9 m

BIOCLIMATIC INDICES I

CI of Supan (1884) [Tmax-Tmin]	(Sp):	13.00
CI of Gorezinski (1920) [1.7*Sp/sin(Lat)-20.4]		13.43
CI of Conrad (1946) [1.7*Sp/sin(Lat+10)-14]		14.52
+ Hyperoceanic (-20<CI<20)		
CI of Currey (1974) [CI=Sp/(1+Lat/3)]		0.89
+ Oceanic (0.6<CI<1.1)		
Rainfall Index of Lang (1925) [R=P/T]		29.34
+ Steppic (40>R>0)		
Aridity Index of Martonne (1926) [Ia=P/(T+10)]		16.73
+ Semiarid -mediterranean- (20>Ia>15)		
I of Emberger (1930) [Q=100*P/(Tmmax ² -Tmmin ²)]		57.44
+ Subhumid (90>Q>50)		
I of Dantin & Revenga (1940) [DR=100*T/P]		3.41
+ Arid (6>DR>3)		
Aridity Index of UNEP [I=P/PE]		0.55
+ Subhumid - dry (0.65>I>0.5)		
Potential Erosion I of Fournier (1960) [K=Pi ² /P]		8.35
+ Very low (K<60)		

FARO SEGUNDA BARRANCA (ARGENTINA)

Latitude: 40°47'S Longitude: 62°16'W Altitude: 9 m

BIOCLIMATIC INDICES II

Bioclimatic classification of Gaussen & Bagnouls (1957)
 + Climate

- + Climate
- + Region
- + Thermic type: 4. Mesothermic

Thornthwaite (1948)												
	Jan.	Feb.	Mar.	Apr.	May.	Jun.	Jul.	Aug.	Sep.	Oct.	Nov.	Dec.
P-E ratio	0.07	0.15	0.24	0.18	0.19	0.05	0.25	0.11	0.16	0.16	0.11	0.08
T-E ratio	8.73	8.77	7.70	6.48	4.81	3.46	2.93	3.33	4.45	5.76	7.06	8.10
Precipitation-effectiveness: 17.56						Temperature-efficiency						71.59
Moisture Index [MI=100*(P-PE)/PE]												-45.37
+ D.Semiarid (-66.7<MI<-33.3)												
Index of dryness [DI=100*d/PE]												45.36
+ Strong deficit (33.3<DI)												
Index of humidity [HI=100*s/PE]												0.00
+ No surplus (0<HI<10)												
Potential Evapotranspiration PE												712.03
+ Second mesothermic (712<PE<855)												

